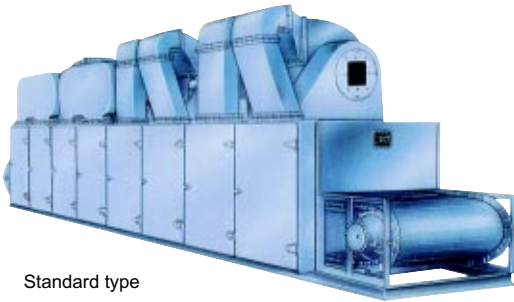
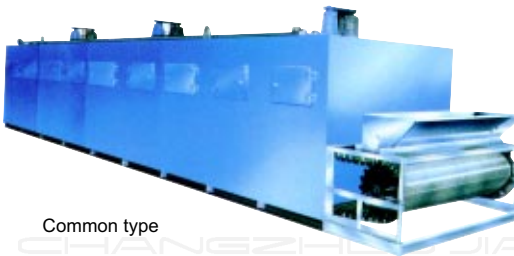


DW Series Mesh-Belt Drier



Standard type



Common type

INTRODUCTION

Raw materials are spreaded on the conveying belt through suitable auxiliary mechanism such as distributor, vibrating belt, pulverizer or granulator, belt passes the channel which containing one or several heating units; heating unit is equipped with air heater and circle system. Each channel has one or several damp exhaust system. When raw material is transited, hot air passes through or over it. In this way it makes raw material dry uniformly.

APPLICATIONS

The mesh-belt drier is a common continuous drying equipment, it is widely applied in chemical, foodstuff, pharmacy, construction material, and electronic industry, and particularly it is adapt to dry the raw materials which have good air permeability and shaped in sheet, strip or granule. For ointment stuff, the wisest way to dry it are: shaped those stuff first, then drying it.

TECHNICAL PARAMETERS

| Type | DW-1.2-8 | DW-1.2-10 | DW-1.6-8 | DW-1.6-10 | DW-2-8 | DW-2-10 | DW-2-20 |
|--|----------|-----------|----------|-----------|---------|----------|----------|
| Unit number | 4 | 5 | 4 | 5 | 4 | 5 | 10 |
| Belt width (m) | 1.2 | 1.2 | 1.6 | 1.6 | 2 | 2 | 2 |
| Section length of drying (m) | 8 | 10 | 8 | 10 | 8 | 10 | 20 |
| Thickness of the material to be covered (mm) | ≤ 60 | | | | | | |
| Temperature (°C) | 50~140 | | | | | | |
| Steam pressure (Mpa) | 0.2~0.8 | | | | | | |
| Steam consumption (kg/h) | 120~300 | 150~375 | 150~375 | 170~470 | 180~500 | 225~600 | 450~1200 |
| Drying time (h) | 0.2~1.2 | 0.25~1.5 | 0.2~1.2 | 0.25~1.5 | 0.2~1.2 | 0.25~1.5 | 0.5~3 |
| Drying strength (kg/h) | 60~160 | 80~220 | 75~220 | 95~250 | 100~260 | 120~300 | 240~600 |
| Total power of the equipment (kw) | 11.4 | 13.6 | 11.4 | 13.6 | 14.7 | 15.8 | 36.8 |
| Overall dimensions | L(m) | 9.56 | 11.56 | 9.56 | 11.56 | 9.56 | 21.56 |
| | W(m) | 1.49 | 1.49 | 1.9 | 1.9 | 2.32 | 2.32 |
| | H(m) | 2.3 | 2.3 | 2.4 | 2.4 | 2.5 | 2.5 |
| Weight(kg) | 4500 | 5600 | 5300 | 6400 | 6200 | 7500 | 14000 |

DW Series Mesh-Belt Drier

FEATURES

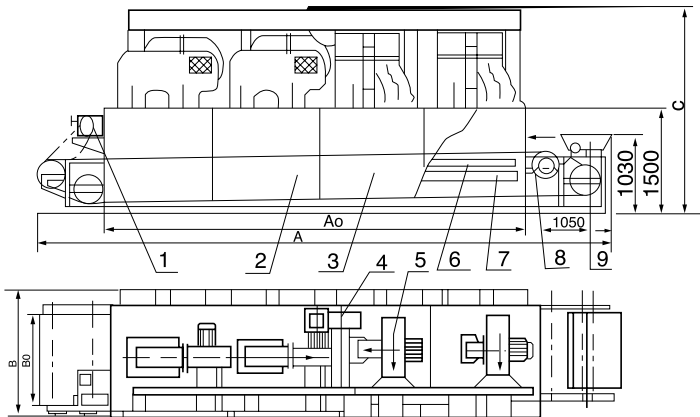
- ⊙ Amount of air, heating temperature, time of material sticking on the belt and velocity of feeding material can be adjusted in order to obtain the best drying effect.
- ⊙ Equipment's configuration is very flexible. It can use the netlike belt washing system and cooling raw material system.
- ⊙ Hot air can be circularly applied, the energy is greatly saved.
- ⊙ Unique air dividing device, it makes hot air distribute uniformly; this can guarantee products' quality.
- ⊙ Heating source can be selected from steam, conducting heat oil, electricity, coal furnace and oil burner.

TYPICAL FINISHED PRODUCTS

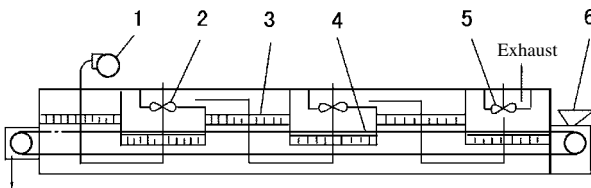
Dehydrated vegetable, granule feedstuff, monosodium glutamate, chicken abstract, desiccated coconut, organic pigment, synthetic rubber, medicines, small wood products, plastic products, aging and solidifying electronics elements, calcium carbonate, white carbon and black dyestuff.



SKETCH OF STRUCTURE



1. Stepless speed regulator
2. Lower circulation
3. Upper circulation
4. Damp exhaust fan
5. Circulating fan
6. Air distributor
7. Heater
8. Driving system
9. Feeder



1. Inlet air blower
2. Circulation air blower
3. Steam heater
4. Transmission belt
5. Exhaust blower
6. Material hopper